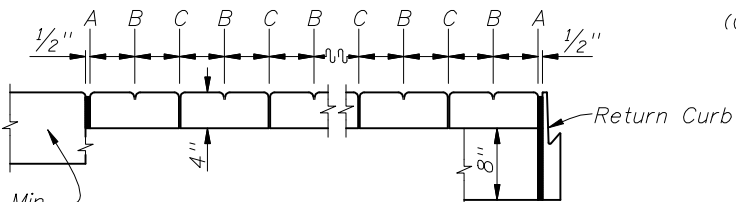


120' Max. 30' Max. 30' Max. 30' Max. **
 Rigid Structure; 6" Min. For Turnouts
 ** "E" Joint(s) Required When Length Exceeds 30'

SAWED JOINTS



Rigid Structure; 6" Min. For Turnouts

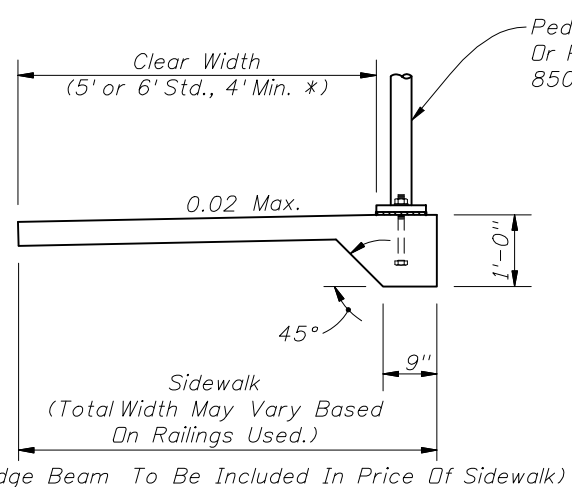
OPEN JOINTS
 EXAGGERATED SCALE
 LONGITUDINAL SECTION
 SIDEWALK JOINTS

JOINT LEGEND

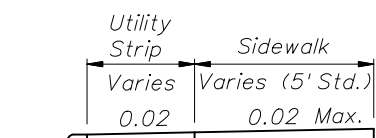
- A- 1/2" Expansion Joints (Preformed Joint Filler)
- B- 1/8" Dummy Joints, Tooled
- C- 1/8" Formed Open Joints
- D- 3/16" Saw Cut Joints, 1 1/2" Deep (within 96 hours) Max. 5' Centers
- E- 3/16" Saw Cut Joints, 1 1/2" Deep (within 12 hours) Max. 30' Centers
- F- 1/2" Expansion Joint When Run Of Sidewalk Exceeds 120'. Intermediate locations when called for in the plans or at locations as directed by the Engineer.
- G- Cold Joint With Bond Breaker, Tooled

NOTES FOR CONCRETE SIDEWALK ON CURBED ROADWAYS

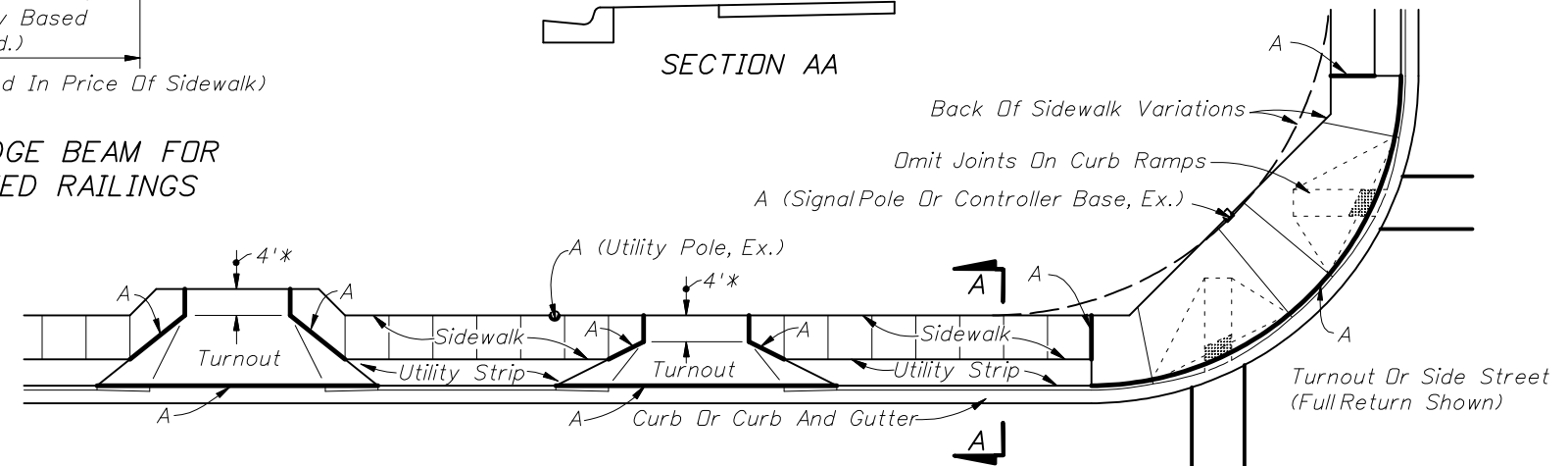
1. Sidewalks shall be constructed in accordance with Section 522 of the FDOT Standard Specifications. Public sidewalk curb ramps shall include detectable warnings and be constructed in accordance with Index No. 304. Detectable warnings are not required where sidewalks intersect urban flared turnouts.
2. Bond breaker material can be any impermeable coated or sheet membrane or preformed material having a thickness of not less than 6 mils nor more than 1/2".
3. For turnouts see Index No. 515.
4. Construct sidewalks with 1" thick Edge Beam through the limits of any surface mounted Pedestrian/Bicycle Picket Railing or Pipe Guiderail shown in the plans.
5. Sidewalk shall be paid for under the contract unit price for Sidewalk Concrete (___ Thick), S.Y.



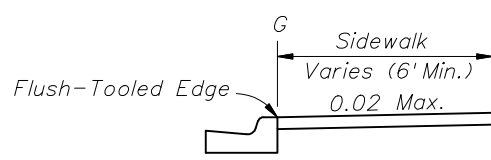
SIDEWALK WITH EDGE BEAM FOR SURFACE MOUNTED RAILINGS



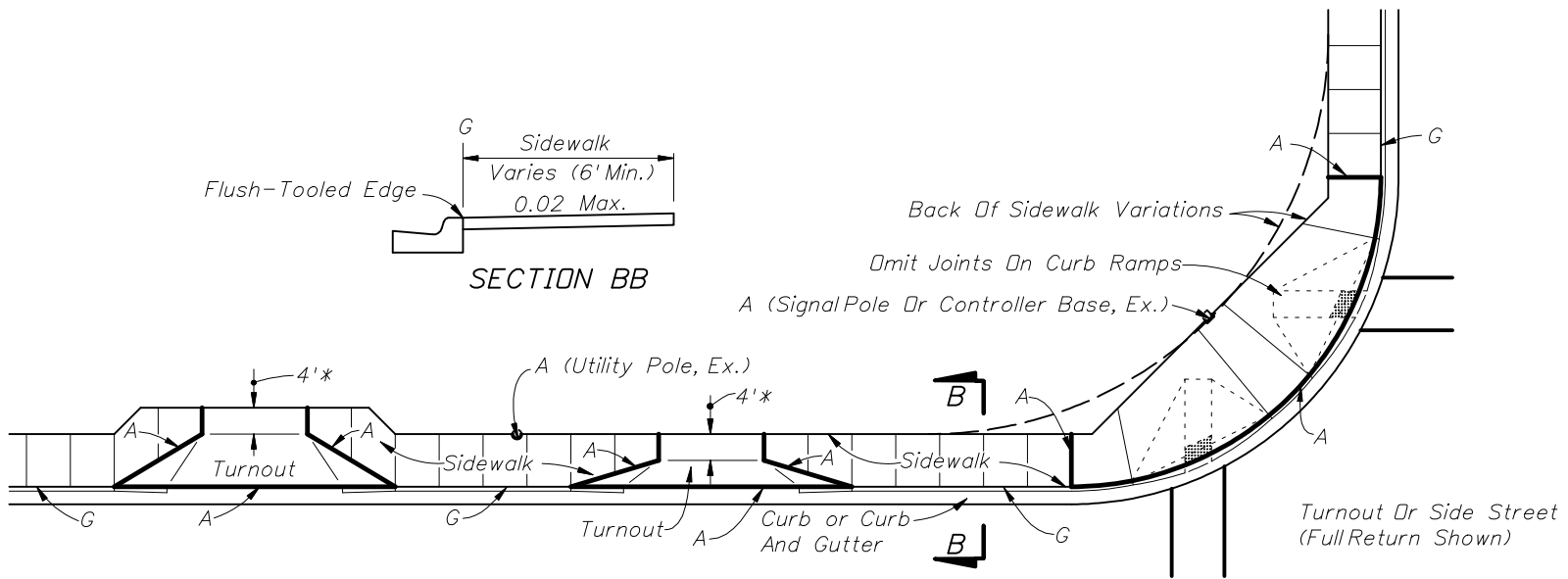
SECTION AA



SIDEWALK WITH UTILITY STRIP



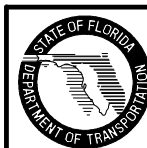
SECTION BB



SIDEWALK WITHOUT UTILITY STRIP

* 4', May Be Reduced To 3' In Restricted Conditions When Approved By The Engineer

CONCRETE SIDEWALK FOR CURBED ROADWAYS



2010 FDOT Design Standards

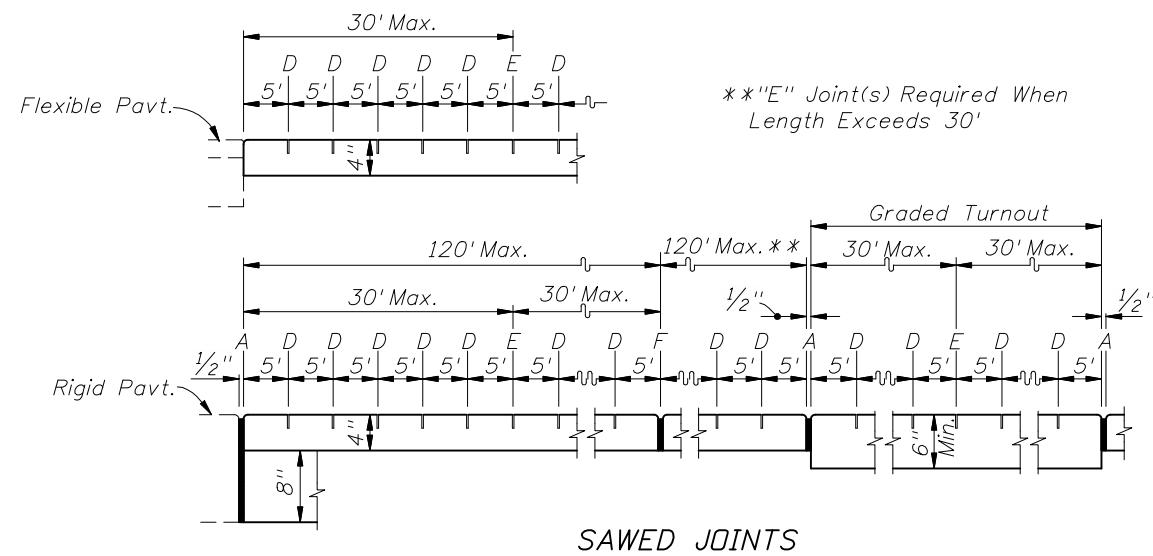
CONCRETE SIDEWALK

Last Revision	Sheet No.
07/01/09	1 of 2
Index No.	
310	

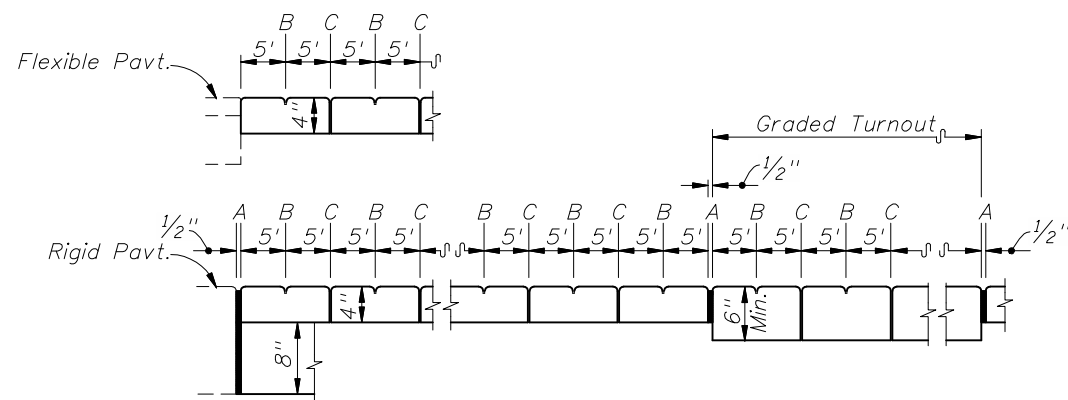
NOTES FOR CONCRETE SIDEWALKS ON UNCURBED ROADWAYS

- Sidewalks shall be constructed in accordance with Section 522 of the FDOT Standard Specifications.
- Provide detectable warnings that extend the fullwidth of the sidewalk and 24" deep from the edge of pavement where sidewalks adjoin the following vehicular ways:
 - side roads and streets
 - driveways with signalized entrances
 - driveways with entrance volumes greater than 600vpd
 - driveways with entrance speeds of 25 mph or greater
 - right in-right out composite driveways
 Detectable warning surfaces shall conform to the requirements described in the General Notes of Index 304. To the extent practical, the rows of truncated domes in a detectable warning surface should be aligned to be perpendicular or radial to the street, roadway, or driveway, as applicable.

For sidewalks continuous through driveways, detectable warning surfaces are not required.
- For turnouts see Index No. 515.
- Construct sidewalks with 1' thick Edge Beam through the limits of any surface mounted Pedestrian/Bicycle Picket Railing or Pipe Guiderail shown in the plans. See Sheet 1 for details.
- Sidewalk shall be paid for under the contract unit price for Sidewalk Concrete (___ Thick), SY.



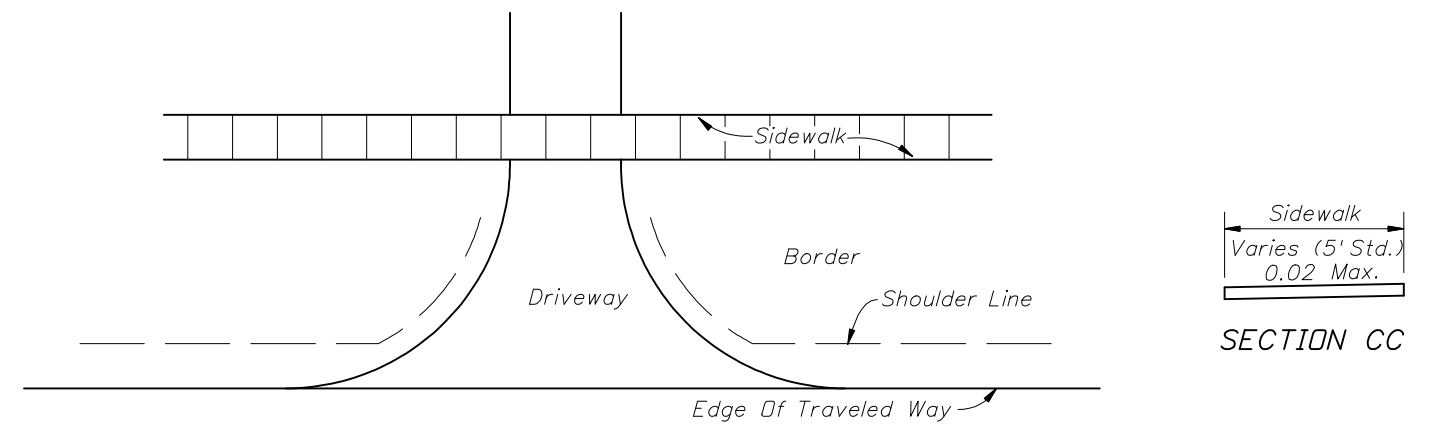
SAWED JOINTS



OPEN JOINTS
EXAGGERATED SCALE
LONGITUDINAL SECTIONS
SIDEWALK JOINTS

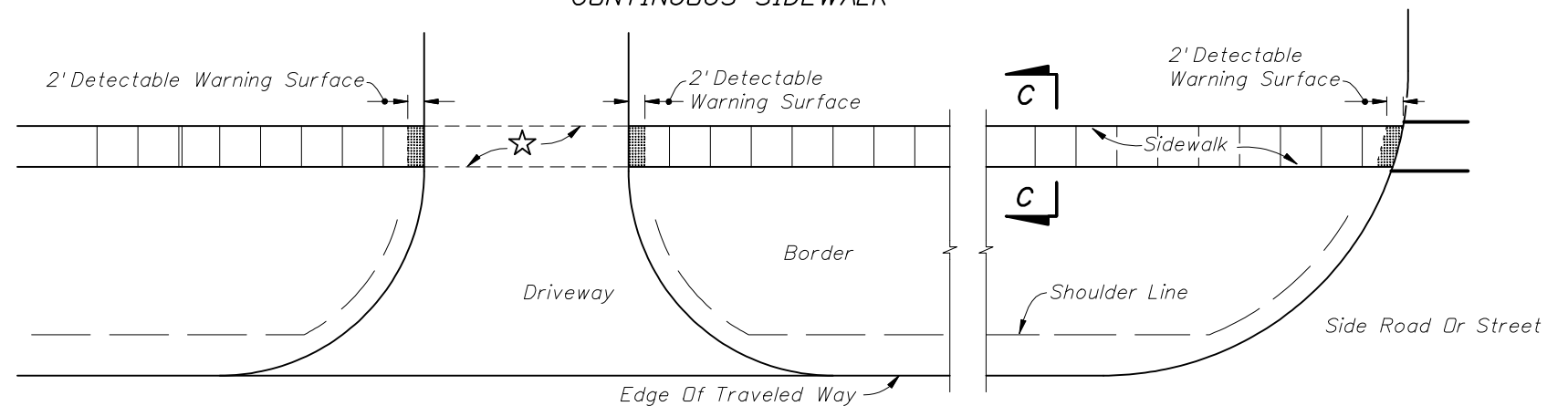
JOINT LEGEND

- A- 1/2" Expansion Joints (Preformed Joint Filler)
- B- 1/8" Dummy Joints, Tooled
- C- 3/16" Formed Open Joints
- D- 3/16" Saw Cut Joints, 1 1/2" Deep (96 Hour) Max. 5' Centers
- E- 1/2" Saw Cut Joints, 1 1/2" Deep (12 Hour) Max. 30' Centers
- F- 1/2" Expansion Joint When Run Of Sidewalk Exceeds 120'. Intermediate locations when called for in the plans or at locations as directed by the Engineer.



SECTION CC

CONTINUOUS SIDEWALK



☆ When driveway is new construction, reconstruction, or altered, cross slope within this area shall not exceed 0.02. Existing driveways that are not being altered may be left as they are.

DISCONTINUOUS SIDEWALK

PLAN

CONCRETE SIDEWALK FOR UNCURBED ROADWAYS



2010 FDOT Design Standards

CONCRETE SIDEWALK

Last Revision	Sheet No.
07/01/09	2 of 2
Index No.	
310	